

InFocus
Collaboration That Works

IN3138HD

Professional Full 3D 1080p Projector



Professional Full 3D 1080p Projector

True High Definition 1080p comes to the Office or Classroom

HD is moving out of the house and into a conference room or classroom near you. The IN3138HD beams today's high definition content with 4000 lumens of brightness at work or school.

1080p resolution is THE standard for high quality media and movies. The InFocus IN3138HD 1080p projector displays today's true high definition content and its high resolution is the perfect match for today's 16:9 notebooks.



IN3138HD – FULL 3D 1080p

- Native full HD 1080p (1920 x 1080) resolution
- 4000 ANSI lumens
- 5000:1 contrast ratio
- NVIDIA 3DTV Play, 144Hz 3D triple flash
- 3D support for Blu-ray, cable boxes and more
- HDMI 1.4, DisplayPort, VGA inputs and more
- RJ45 network connection
- Screen trigger
- VGA and variable audio out

Audio

The IN3138HD features a 10W on-board speaker that can fill most meeting or class rooms. No additional audio equipment is required.

Portable or installed

The IN3138HD projector's light weight, high brightness, strong audio, and numerous connectivity options means it will be ready for any situation. The same features, including its RJ45 networking port, make it a strong candidate for installation too.

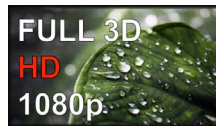
Impressive image quality

With up to 4000 lumens, high contrast, 1920 x 1080 resolution, six-segment color wheel, and BrilliantColor™ DLP imaging, the IN3138HD projects big, bright, colorful HD images with the lights on and the blinds open.



3D

The IN3138HD supports multiple forms of 3D – including HDMI, Blu-Ray, 3D broadcasting, video games and NVIDIA



3DTV PC connectivity – in 1080p Full-HD for your maximum viewing pleasure. Compatible with 144Hz DLP Link™ 3D glasses.

3D Triple Flash

The IN3138HD uses the latest Texas Instruments DLP® Dark Chip 3 technology and drivers (DLP 0.65" 1080P s600 DC3) and incorporates 3D Triple Flash technology. 3D Triple Flash triples the normal 3D frame rate of 48 Hz (24 for the right eye and 24 for the left) to 144 Hz, which gives you a deeper, more immersive 3D experience.



Connectivity

VGA x 2	RS232
HDMI 1.4	3.5mm audio in
DisplayPort	RCA stereo audio in
S-Video	3.5mm audio out
Composite video	Monitor Out (VGA)
RJ45	12v trigger

Distance Chart

Diagonal Screen Size (16:9 screen)		Projection Distance			
		Inches		Metres	
Inches	Metres	Min	Max	Min	Max
77	1.9558	106.04	128.85	2.69	3.27
82	2.0828	112.92	137.22	2.87	3.49
92	2.3368	126.69	153.96	3.22	3.91
100	2.54	137.71	167.34	3.5	4.25
106	2.6924	145.97	177.38	3.71	4.51
110	2.794	151.48	184.08	3.85	4.68
119	3.0226	163.87	199.14	4.16	5.06
133	3.3782	183.15	222.57	4.65	5.65
159	4.0386	218.96	266.07	5.56	6.76



Connect to the latest devices

This projector is loaded with connectivity options, including HDMI and DisplayPort. Project from PCs, Macs, video sources, tablets and smartphones. The IN3138HD with native 1080p resolution projects high definition video and widescreen notebooks at full resolution without scaling.

DisplayPort provides the fastest refresh rates, the deepest color depths and the highest fidelity with near zero latency. Plus, it not only connects backwards to older technologies, it is designed to accommodate future advances too.

Networked support

With the IN3138HD, your IT manager and tech team can manage and control the projector the same way as a printer—remotely. That cuts time and cost for routine tasks such as troubleshooting and maintenance. And when presenters need tech support, they can get it instantly through the network.

Digital control

Connect to and control your IN3138HD projector via your IT network with Crestron Roomview and AMX Device Discovery. Roomview enables instant, intuitive operation of your projector with no need for a control processor or custom programming.

You can also use an AMX controller to detect your IN3138HD projector dynamically and configure it with the correct driver for remote control.



Specifications*

IN3138HD

Panel / Native Resolution	DLP 0.65" 1080P s600 DC3, 1920x1080
Data Processor	DDP4422
Brightness	4000 ANSI lumens (3500 ANSI lumens Eco Mode)
Brightness Uniformity (Typical)	80%
Lamp Life**	3,000 hours (Standard Mode), 4,000 hours (Eco Mode)
Contrast Ratio (Typical)	5000:1
Input Connections	VGA x 2, HDMI 1.4a, DisplayPort, S-Video, Composite video, RCA stereo audio in (L/R), 3.5mm stereo audio in
Output Connections	VGA out, 3.5mm stereo audio out
Control	RS-232, 12V screen controller, USB Mini-B (service) LAN Control Function: Crestron / AMX / TelNet / Extron
Network	RJ45
3D	Supports all major 3D standards for DLP projectors, including 3D content from Blu-ray, cable boxes, dish services, PCs and more (over HDMI at 1080p). 144Hz DLP Link™ 3D glasses required.
Color Wheel	6 segments (RYGCWB)
Color Reproduction	Graphic: 30 bit 1 billion true color, Video: 30 bit 1 billion true color
Lens Type	Manual Zoom, Manual Focus
Zoom Ratio	Digital Zoom ; Optical Zoom: 1.22:1
Projection Distance	25.6 – 300 in (65 – 762 cm)
Projection Screen Size	3.28 - 32.8 ft (1 - 10 m)
Throw Ratio (D/W)	1.58- 1.92
Optical Offset	110% +/- 10%
Aspect Ratio	16:9 (native) & 4:3 / letter box / 2.35:1 (supported)
Keystone Correction	+/- 40° (vertical only)
Frequency H-Sync	15, 30-90 KHz
Frequency V-Sync	43-85 Hz (120Hz)
Data Compatibility	VGA, SVGA, XGA, SXGA, Macintosh
Video Compatibility	NTSC/NTSC 4.43, PAL B/G/H/I/M/N 60, SECAM, 480i/480p/720p/1080p
Acoustic Noise	37 dB (Standard Mode), 35 dB (Eco Mode)
Built-in Speaker	10w mono speaker
Power Supply	AC input 100~240 Voltage (auto ranging)
Power Consumption (maximum)	340 W (Standard Mode), 290 W (Eco Mode), <0.5 W (Standby Mode)
Product Dimensions (WxDxH)	11.2 x 10.3 x 4.8 inches / 285 x 261 x 121.8 mm
Product Weight	6.94 lbs / 3.15 kg
Shipping Dimensions	14.5 x 15.4 x 8.2 in / 369 x 392 x 208 mm
Shipping Weight	10.25 lbs / 4.65 kg
Security Features	Security lock slot, Security bar
Ships with -- Accessories	Power Cord, VGA Cable, Remote Control, Quick Start Guide, CD for User's Manual
Warranty	2 years (projector), 6 months (lamp), 90 days (accessories)
Menu Languages	English, Français, Deutsch, Español, Português, 中國傳統, 简化中国, Italiano, Norsk, Svenska, Nederlands, Русский, Polski, Suomi, ελληνικά, 한국어, Magyar, Čeština, العربية, Türkçe, Việt, 日本語, יידיש, תענית, Bahasa Indonesia
Approvals	FCC, UL/cUL, CE+, TUV-GS, CU-PCT, PSB

* Product specifications, terms, and offerings are subject to change at any time without notice.

** Actual lamp life may vary based on the ambient environment and projector usage. Conditions that may affect lamp life include temperature, altitude, and rapidly switching the projector on and off.

Optional Accessories

Replacement Lamp (SP-LAMP-088)
 Universal Ceiling Mount (PRJ-MNT-UNIV)
 LiteShow Wireless Adapter (INLITESHOW3)
 Carrying Case (CA-SOFTCASE-MTG)
 ATA Travel Case (CA-ATA-MTG2)
 Extended warranties (PROJ-EW1YR-MC, PROJ-EW2YR-MC)
 Cables and adapters

InFocus
 Collaboration That Works

www.infocus.com

INFOCUS CORPORATE HEADQUARTERS
 13190 SW 68th Parkway
 Portland, Oregon 97223-8368, USA
 Phone: (1) 503-207-4700
 Toll Free: (1) 877-388-8385
 Fax: (1) 503-207-4707