

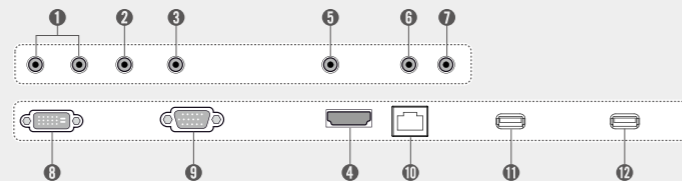
Specifications

SE3B Series	65SE3B	55SE3B	49SE3B	43SE3B	32SE3B
Screen Size	65	55	49	43	32
Panel Technology	IPS				
Aspect Ratio	16 : 9				
Native Resolution	1,920 x 1,080 (FHD)				
Brightness	400cd/m ²	350cd/m ²	350cd/m ²	350cd/m ²	350cd/m ²
Contrast Ratio	1,300:1	1,100:1	1,100:1	1,100:1	1,100:1
Dynamic CR	500,000:1				
Viewing Angle (H x V)	178 x 178				
Surface Treatment	Hard coating (3H), Anti-glare treatment of the front polarizer (Haze 1 % (Typ.))				
Guaranteed Operating Hour	18 Hours				
Orientation	Portrait & Landscape				
Input	HDMI, DVI-D, RGB, Stereo Mini Jack, USB (2)				
Output	Stereo Mini Jack, External Speaker Out				
External Control	RS232C (In/Out), RJ45, IR Receiver				
Bezel Color	Black				
Bezel Width	11.9mm (T/R/L), 18mm (B)	11.9mm (T/R/L), 18mm (B)	11.9mm (T/R/L), 18mm (B)	11.9mm (T/R/L), 18mm (B)	13mm (T/R/L), 18mm (B)
Monitor Dimensions (W x H x D)	1,456.9 x 838 x 41.1mm	1,238 x 714.9 x 38.6mm	1,102.2 x 638.5 x 38.6mm	969.6 x 563.9 x 38.6mm	729.4 x 428.9 x 55.5mm
Weight (Head)	27.7kg	17.3kg	14.1kg	9.8kg	5.2kg
Weight (Head + Stand)	32.9kg	20.6kg	17.4kg	12.3kg	6kg
Monitor with Optional Stand & Speaker Dimensions (W x H x D)	1,456.9 x 898.1 x 293.7mm	1,238 x 773.4 x 219.6mm	1,102.2 x 696.8 x 219.6mm	969.6 x 622.2 x 193mm	729.4 x 481 x 154.2mm
Weight (Head + Stand + Speaker)	33.4kg	21.1kg	17.9kg	12.8kg	6.5kg
Carton Dimensions (W x H x D)	1,561 x 977 x 190mm	1,330 x 807 x 170mm	1,197 x 760 x 166mm	1,052 x 650 x 123mm	810 x 510 x 132mm
Packed Weight	33.6kg	21.5kg	17.2kg	12.4kg	6.5kg
VESA™ Standard Mount Interface	300 x 300mm		200 x 200mm		
SPECIAL FEATURES	USB Content Scheduling, Conformal Coating, SNMP Support, Wi-Fi Ready (Dongle), Power Management modes (Sustain Aspect Ratio/Stand-by Screen, etc.), No Signal Image setting, Enhanced ISM (Image Sticking Minimization) Mode, Holiday Schedule/Local Time Auto Setting, Fail-over (USB, RGB, DVI, HDMI), Wake on LAN				
ENVIRONMENTAL CONDITIONS	Operating Temperature range	0 °C to 40 °C	0 °C to 40 °C	0 °C to 40 °C	0 °C to 40 °C
	Operating Humidity range	10 % to 80 %	10 % to 80 %	10 % to 80 %	10 % to 80 %
POWER	Power Supply	100-240V~, 50/60Hz			
	Power Type	Built-In Power			
POWER CONSUMPTION	Typ.	95W	70W	65W	60W
	Smart Energy Saving	70W	55W	50W	45W
STANDARD (CERTIFICATION)	Safety	UL / cUL / CB / TUV / KC			
	EMC	FCC Class "A" / CE / KCC			
	ErP / Energy Star	Yes/NA	Yes/Yes	Yes/Yes	Yes/Yes
MEDIA PLAYER COMPATIBILITY	OPS Type Compatible	No	No	No	No
	External Media Player Attachable	Yes (MP500/MP700)	Yes (MP500/MP700)	Yes (MP500/MP700)	Yes (MP500/MP700)
SOFTWARE COMPATIBILITY	SuperSign W/Lite	Yes			
	SuperSign C	Yes			
ACCESSORY	Basic	Remote Controller (2 batteries included), Power Cord, QSG, RGB Cable, Regulation Book, Phone to RS232C Gender, IR Receiver			
	Optional	Speaker (SP-5000), Stand (ST-652T), Wall bracket (LSW350B), VESA Adapter (AM-B330S), Media Player	Speaker (SP-5000), Stand (ST-492T), Wall bracket (LSW350B), VESA Adapter (AM-B330S), Media Player	Speaker (SP-5000), Stand (ST-492T), Wall bracket (LSW350B), VESA Adapter (AM-B330S), Media Player	Speaker (SP-5000), Stand (ST-432T), Wall bracket (LSW230B), VESA Adapter (AM-B220S), Media Player

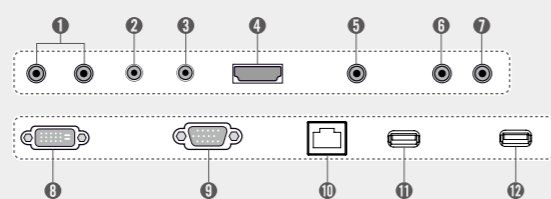
Connectivity

- 1 SPEAKER OUT
- 2 RS-232C IN
- 3 RS-232C OUT
- 4 HDMI
- 5 EXT IR IN
- 6 AUDIO IN
- 7 AUDIO OUT
- 8 DVI-D IN
- 9 RGB IN
- 10 LAN
- 11 USB1
- 12 USB2

65SE3B



55SE3B / 49SE3B / 43SE3B / 32SE3B



Download LG Commercial Display Mobile App



More info www.lgcommercial.com

YouTube [youtube.com/c/LGCommercialDisplay](https://www.youtube.com/c/LGCommercialDisplay)

LG may make changes to specifications and product descriptions without notice. Copyright © 2015 LG Electronics Inc. All rights reserved. "LG Life's Good" is a registered of LG Corp. The names of products and brands mentioned here may be the trademarks of their respective owners.



Simple Way to Manage Your Digital Signage Standard Essential SE3B Series



Simplify promotion content or sales information management with the LG SE3B Series that satisfies a wide range of display purposes in your business. This series has a practical design with a slimmer bezel and depth for optimum space utilization. Multiple screen sizes ensure the best selection for your business environment.

Key Features

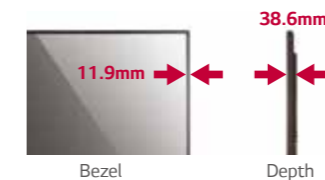
Enhanced Design Configuration



Slim

Slimmer Bezel & Depth

The thinner bezel & depth allows a perfect fit for a sleek look.



11.9mm

38.6mm

Bezel

Depth

Detachable Logo

Portrait mode allows the logo to be positioned in the desired setting.



Cable Management

The well-organized cable terminals in the back optimize available space.



USB Content Management



USB Content Scheduling

Play and schedule contents with a USB connection-no server connection required.



*Supported Content Type : Video (MPEG1/2/4, H.264), Audio (MP3, AC3, MPEG, AAC, HEAAC, LPCM), Image (JPEG, PNG, BMP)

Dust & Humidity Protection



Conformal Coating

Circuit board reliability is enhanced with conformal coating that protects against dust, iron powder, humidity and other harsh conditions.



Simple Way to Manage Your Digital Signage

Standard Essential SE3B Series



Screen Sizes
65"/55"/49"/43"/32"

SE3B Series

- Edge-lit LED
- Brightness: 350cd/m² (65" 400cd/m²)
- Bezel : Top/Left/Right 11.9mm (Bottom 18.0mm)
- Depth : 38.6mm (65" : 41.1mm, 32" : 55.5mm)
- Special : Wi-Fi Dongle Ready, SuperSign W/C/M
- Local Time Auto Setting
- HDMI/DVD-D/RGB/RJ 45, RS232C in/out, 2 USB ports
- Embedded Media Player

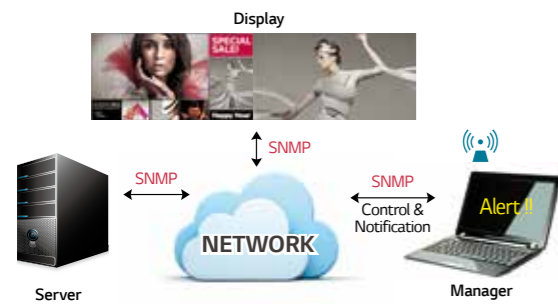


Other Features

Remote Management

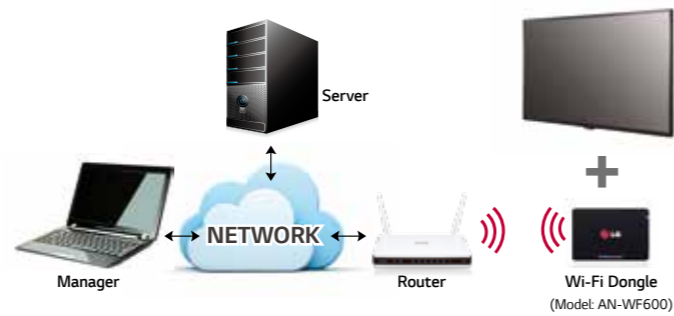
Simple Network Management Protocol

SNMP support ensures convenient network management.



Wi-Fi Support

SE3B Series support Wi-Fi USB dongle connection for convenient content distribution.



Convenient Screen Mode

Aspect Ratio Sustainability*

Sustain the same resolution and picture quality while powering on/off by receiving EDID¹⁾ through switch IC.



Stand-by Screen*

Even without signal from the media player, the network does not turn off completely, so remote control is possible, which prevents unnecessary power usage and enables efficient management.



Scheduled Screen Wash**

Prevent residual images with the screen transition feature.



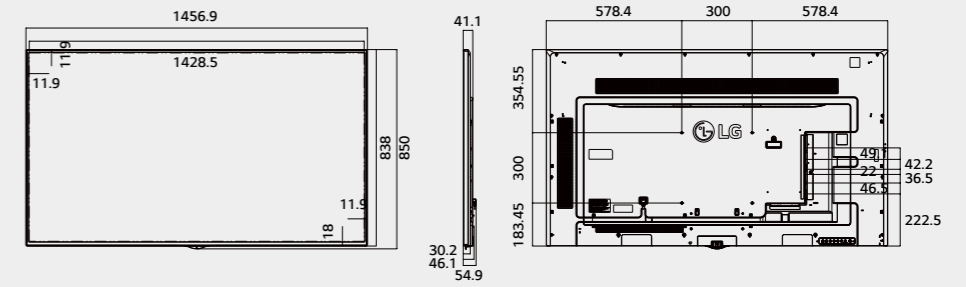
1) Extended Display Identification Data.
* Installation Menu > LG Digital Signage > PM Mode

** Installation Menu > ISM Method

Dimension (unit : mm)

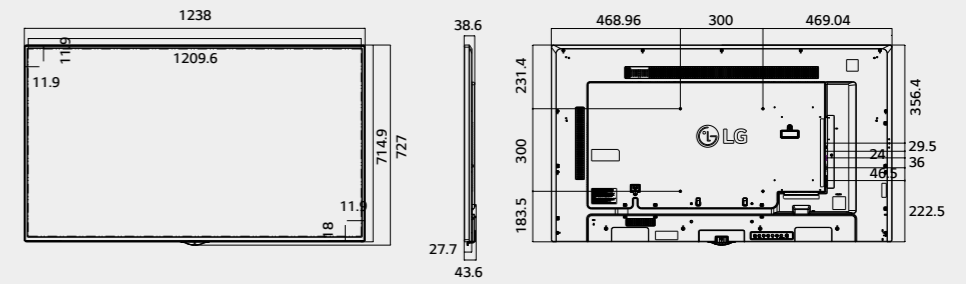
65"

1,456.9 x 838 x 41.1 /
27.7kg



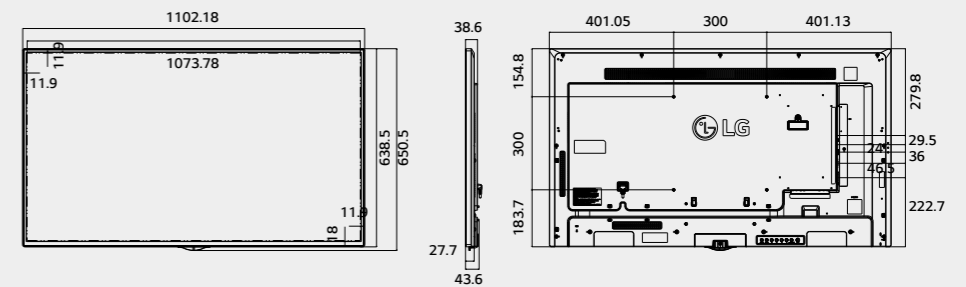
55"

1,238 x 714.9 x 38.6 /
17.3kg



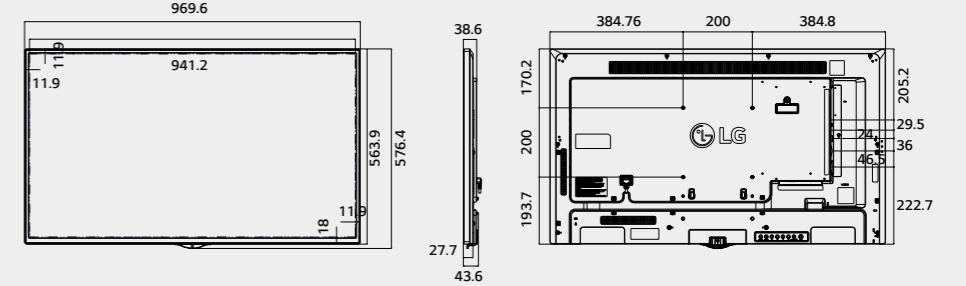
49"

1,102.2 x 638.5 x 38.6 /
14.1kg



43"

969.6 x 563.9 x 38.6 /
9.8kg



32"

729.4 x 428.9 x 55.5 /
5.2kg

